

Ansaugluft 22 ° C Leistungsdigramm

Öltemperatur 90 ° C

Wassertemp. 82 ° C

Öldruck 4,5 kg/cm<sup>2</sup>

Leistung Spitze 146 PS<sup>1</sup>

Drehmoment Spitze 142 Nm

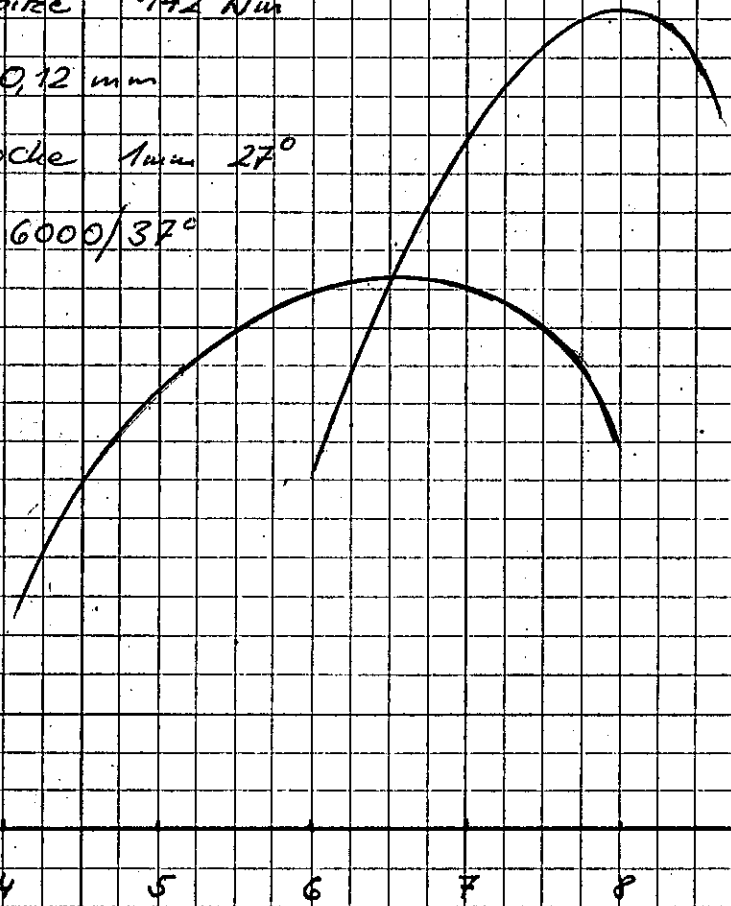
Ventilspiel 0,12 mm

Steuerzeit Nocke 1mm 27°

Zündung bei 6000/37°

PS  
150  
145  
140  
135  
130  
125  
120  
115  
110  
105  
100

Nm  
160  
150  
140  
130  
120  
110  
100  
90  
80  
70  
60  
50  
40  
30  
20  
10



Motor Watanabe Gr II

Ausführung	gezeichnet
	Maßstab 1:20
Kommission	Datum
	Hofmann G. Ehrenberg

MODEL \_\_\_\_\_

### DRIVING PERFORMANCE CURVE

GEAR RATIO 1ST	11-35	3.18	MAX. TORQUE	13.7	kg·m/rpm
2ND	16-31	1.94	CURB WEIGHT		kg
3RD	19-28	1.47	AREA OF FRONT VIEW		m <sup>2</sup>
4TH	22-25	1.14	TIRE EFFECTIVE RADIUS	275	mm
5TH	23-23	1.00	CO-EFFICIENT OF ROLLING RESISTANCE		
REVERSE RATIO	12-35	2.91	CO-EFFICIENT OF AIR DRAG		
REDUCTION RATIO	15-61	4.06	TRANSMISSION EFFICIENCY		
MAX. OUTPUT	140 ps/rpm		TEST WEIGHT		kg

